

Typical characteristics

- Wide range input: 85-305VAC/80-432VDC
- No-load power: 0.1W(Typ.)
- Conversion Efficiency: (Typ.86%)
- Switching frequency: 65KHz
- Protection: short circuit, overcurrent, overload
- Isolation voltage: 3750Vac
- Housing: Plastic, UL94V-0 compliant
- Plug-in mounting on the PCB board
- CE and RoHS compliant

10W, wide-input-voltage, isolated regulated single-output (S)/dual-output with common ground (D)/dual-output isolated (E), AC-DC power module

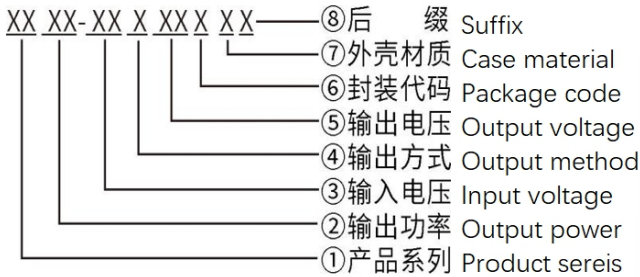


RoHS

The HAW10_S-F2, HAW10_D-F2, and HAW10_E-F2 series are compact, high-efficiency module power supplies offered by Huizhi Electronics.

This series of power supplies offers a wide range of input voltages, AC/DC compatibility, low ripple, low temperature rise, low power consumption, high efficiency, high reliability, high-level safety isolation, and excellent EMC performance. These products are widely used in various fields, including power, industrial, instrumentation, and smart home applications. When using these products in environments with poor electromagnetic compatibility, please refer to the EMC application circuits provided by our company.

Model Number Description



Product selection table

Certification	Model number	Output specifications				Maximum capacity sexual load Max.	ripple and noise 20MHz (Max) Typ.	Efficiency @ full load, 220Vac (Typical) Typ.	
		Power	V. 1	Io 1	V. 2				Io 2
		W	Vo1 (V)	Io1 (mA)	Vo2 (V)				Io2 (mA)
	HAW10-220S05F2	10	5	2000	-	-	4000	80	83
	HAW10-220S09F2	10	9	1111	-	-	2200	80	84
	HAW10-220S12F2	10	12	833	-	-	1000	80	84
	HAW10-220S15F2	10	15	666	-	-	1000	80	85
	HAW10-220S24F2	10	24	416	-	-	470	80	86

HAW10-220D05F2	10	+5	1000	-5	1000	2200/2200	80	83
HAW10-220D09F2	10	+9	555	-9	833	1000/1000	80	84
HAW10-220D12F2	10	+12	416	-12	416	1000/1000	80	84
HAW10-220D15F2	10	+15	333	-15	333	470/470	80	85
HAW10-220D24F2	10	+24	208	-24	208	470/470	80	86
HAW10-220E05F2	10	+5	1000	+5	1000	2200/2200	80	83
HAW10-220E0512F2	10	+5	1000	+12	416	2200/1000	80	84
HAW10-220E0524F2	10	+5	1000	+24	208	2200/1000	80	85
HAW10-220E12F2	10	+12	416	+12	416	1000/1000	80	85
HAW10-220E24F2	10	+24	208	+24	208	470/470	80	85

Note 1: Due to space limitations, the above is only a partial list of products. For products not included in the list, please contact our Sales Department.

Note 2: "*" indicates models currently under development.

Note 3: Typical output efficiency values are based on measurements taken after the product has been aged under full load for 30 minutes.

Note 4: The full-load efficiency (% TYP) in the table has a tolerance of $\pm 2\%$. Full-load efficiency is calculated as the total output power divided by the module's input power.

Note 5: Adding a capacitive load to the output may cause output voltage instability under no-load or light-load conditions. We recommend using a load of at least 5% of the rated capacity.

Input characteristics

Items	Working conditions	Minimum	Typical	Maximum	Unit
Input voltage range	AC input	85	220	305	VAC
	DC input	80	310	432	VDC
Input frequency range	-	47	50	63	Hz
Input current	115VAC	/	/	0.32	A
	220VAC	/	/	0.16	
Surge current	115VAC	/	/	10	
	220VAC	/	/	20	
Leakage current	-	0.5mA TYP/230VAC/50Hz			
External insurance management recommendation value	-	2A-3A/250VAC slow-break fuse			
Hot-swappable	-	Not supported			
Remote control	-	There is no remote control			

Output characteristics

Items	Working conditions	Minimum	Typical	Maximum	Unit	
Voltage accuracy	Input full voltage range	Vo1	-	± 1.0	± 2.0	%
	Any load	Vo2	-	± 3.0	± 5.0	%

Linear regulation rate	Rated load	Vo1	-	-	± 0.5	%
		Vo2	-	-	± 1.5	%
Load regulation rate	Input nominal voltage 20%~100% load	Vo1	-	-	± 1.0	%
		Vo2	-	-	± 3.0	%
No-load power consumption	Input 115VAC	-	-	0.1	W	
	Input 220VAC	-	-			
Minimum load	Single output	0	-	-	%	
	Positive and negative dual co-ground output	10 (balance load)	-	-	%	
	Positive and negative dual isolated outputs	10 (balance load)	-	-		
Startup delay time	Input Rated Voltage (Full Load)	-	1000	-	mS	
Power down hold time	Input 115VAC	-	10	-	mS	
	Input 220VAC	--	60	-		
Dynamic response	25%~50%~25% 50%~75%~50%	Overshoot amplitude (%): $\leq \pm 5.0$			%	
		Recovery time (mS): ≤ 5.0			mS	
Output overshoot	Input full voltage range	$\leq 10\%V_o$			%	
Short-circuit protection		It can be short-circuited for a long time and self-recovering			Barrier type	
Drift coefficient	-	-	$\pm 0.03\%$	-	%/°C	
Overcurrent protection	Input full voltage range	$\geq 150\% I_o$ is self-recoverable			Barrier type	
Ripple Noise	-	-	50	80	mV	
	Note: The test method for ripple and noise uses the twisted-pair test method. For specific test procedures and equipment requirements, please refer to the section below (Ripple & Noise Test Instructions).					

General characteristics

Items	Working conditions	Minimum	Typical	Maximum	Unit
Switching frequency	-	-	65	-	KHz
Operating temperature	-	-40	-	+75	°C
Storage temperature	-	-40	-	+85	
Soldering temperature	Wave soldering	$260 \pm 4^\circ\text{C}$, time: 5-10S			
	Hand soldering	$360 \pm 8^\circ\text{C}$, interval 4-7S			
Relative humidity	-	10	-	90	%RH

Isolation voltage	Input-output, test for 1 minute, leakage current $\leq 5\text{mA}$	3750	-	VAC
Insulation resistance	Input-output @ apply DC500V	100	-	MΩ
Safety standards	-	EN60950、IEC60950		
Vibration	-	10-55Hz, 10G, 30Min, alongX, Y, Z		
Safety level	-	CLASS II		
Enclosure grade	-	UL94V-0		
Mean Time Between Failures (MTBF)	-	MIL-HDBK-217F@25°C >300,000H		

EMC Electromagnetic Compatibility Characteristics

Total Project	Sub-projects	Testing standards	Judgment grade
EMC	EMI	Conducted Emission	CISPR22/EN55032 CLASS B
		Radiated Emission	CISPR22/EN55032 CLASS B
	EMS	Radiation Immunity	IEC/EN61000-4-3 10V/m Perf. Criteria B
		Conducted Susceptibility	IEC/EN61000-4-6 3Vr. m. s Perf. Criteria B
		Electrostatic Discharge	IEC/EN61000-4-2 Contact $\pm 6\text{KV}$ / Air $\pm 8\text{KV}$ Perf. Criteria B
		Surge Immunity	IEC/EN61000-4-5 $\pm 1\text{KV}$ Perf. Criteria B
		Electrical Fast Transient (EFT) Immunity	IEC/EN61000-4-4 $\pm 2\text{KV}$ Perf. Criteria B
		Immunity to Voltage Sag and Transient, Short Interruption	IEC/EN61000-4-11 0%~70% Perf. Criteria B

Package Dimensions

单位(Unit):mm
 印刷板俯视图(Printed board vertical view)
 栅格间距(Lattice spacing): 2.54mm(0.1inch)
 未标注尺寸公差±0.25mm
 未注明引脚直径公差±0.1mm

Package code	L x W x H	
F2	62.0 x 45.0 x 22.5 mm	2.441 × 1.772 × 0.885inch

Pin Definition

Pin	1	2	3	4	5	6	7	8
Single (S)	FG	AC (N)	AC (L)	+Vo	NP	NP	NP	-Vo
	No function	Input - wire	Input + wire	Output + terminal	Bare pin	Bare pin	Bare pin	Output - terminal
Dual common ground (D)	FG	AC (N)	AC (L)	+Vo1	NP	COM	NP	-Vo2
	No function	Input - wire	Input + wire	Output + terminal 1	Bare pin	Common terminal	Bare pin	Output - terminal 2
Dual isolation (E)	FG	AC (N)	AC (L)	+Vo2	-Vo2	NP	+Vo1	-Vo1
	No function	Input - wire	Input + wire	Output + terminal 2	Output - terminal 2	Bare pin	Output positive terminal 1	Output - terminal 1

Note: If the pin definitions of the power module differ from those in the selection guide, refer to the labels on the actual product.

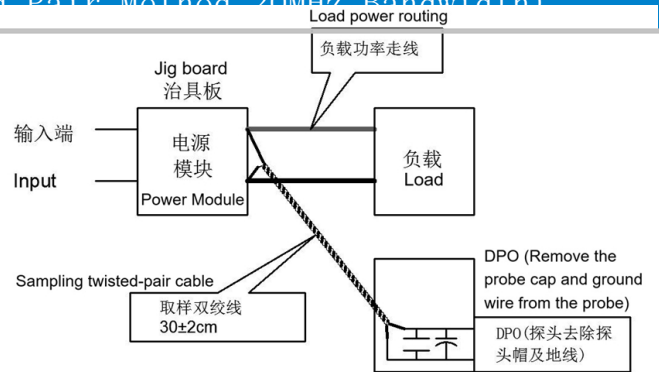
Ripple & Noise Test Instructions (Twisted Pair Method 20MHz Bandwidth)

Test Method:

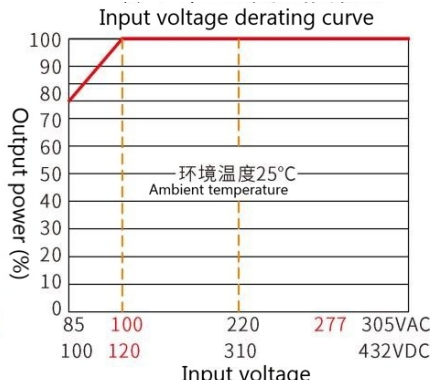
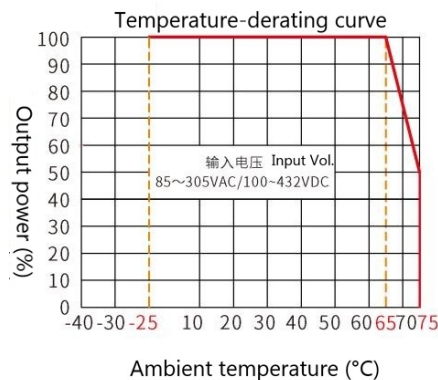
1. For ripple and noise testing, use a Category 12 twisted-pair cable. Set the oscilloscope bandwidth to 20 MHz and use a 100 MHz bandwidth probe. Connect a 0.1 μF polypropylene capacitor and a 10 μF high-frequency, low-impedance electrolytic capacitor in parallel at the probe tip. Set the oscilloscope to “Sample” mode.

2. Output Ripple Noise Test Diagram:

Connect the power supply input to the input power source. Connect the power supply output to the electronic load via the fixture board. For testing, use a 30 cm ± 2 cm sampling lead to take a direct sample from the power supply output port. Select insulated wires with appropriate gauge based on the magnitude of the output current.



Product characteristic curve



Note 1: The input voltage is 85 - 100 VAC.

Voltage derating must be performed based on the input voltage derating curve.

Note 2: This product is designed for use in naturally ventilated environments. Please contact us if you intend to use it in an enclosed environment.

Typical application circuit diagram and recommended parameters

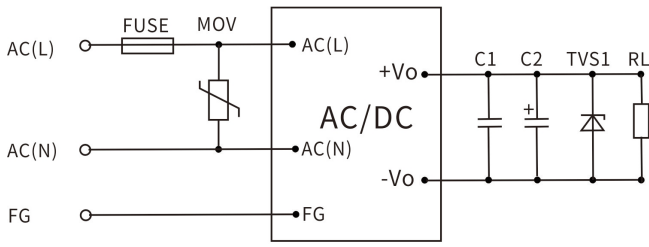


图1

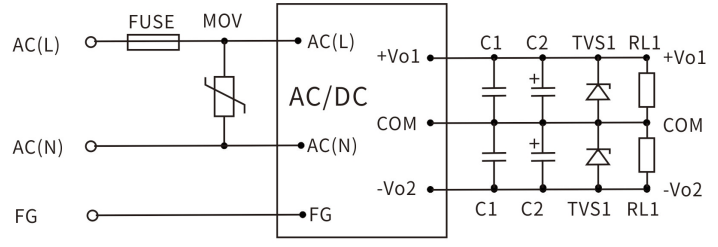


图2

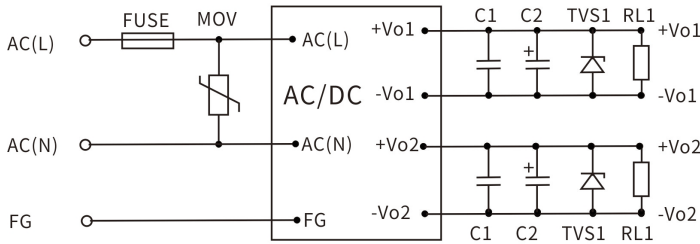


图3

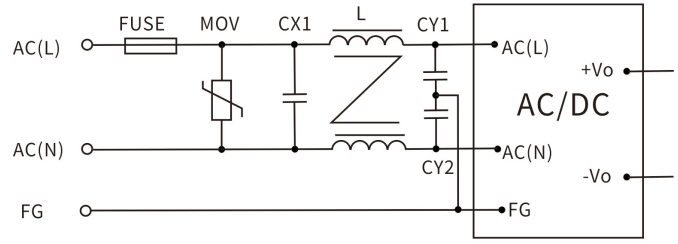


图4

Note:

- Output filter capacitors C1 and C3 are used to eliminate high-frequency noise. It is recommended to use $1\mu\text{F}$ ceramic capacitors with a voltage rating derated by more than 80%.
- Output filter capacitors C2 and C4 are electrolytic capacitors. We recommend using high-frequency, low-impedance electrolytic capacitors with a rating of $100\mu\text{F}$ and 1 A output current. The capacitors should have a voltage rating derated by more than 80%.
- TVS diodes are recommended to protect the downstream circuitry (in case of module malfunction). Recommended 600W model. For 5V output, recommend: SMBJ7.0A; for 9V output, recommend: SMBJ12.0A; for 12V output, recommend: SMBJ20A; for 15V output, recommend: SMBJ20.0A; for 24V output, recommend: SMBJ30.0A; for 48V output, recommend: SMBJ64A
- MOV stands for Metal Oxide Varistor. Recommended models: 10D561K (1000V surge) or 14D561K (2000V surge). Its function is to protect the module from damage during lightning surges.
- For general application requirements, customers should use the recommended circuits shown in Figures 1, 2, and 3. If higher EMC requirements are needed, please use the recommended circuit shown in Figure 4. The specific recommended values for Figure 4 are as follows:
 - Varistor (MOV): Recommended model: 14D-561K. Its function is to protect the module from damage during lightning surges.
 - Safety capacitors CY1 and CY2: $1000\text{ pF}/400\text{ VAC}$;
 - Safety capacitors CY1 and CY2: $1000\text{ pF}/275\text{ VAC}$;
 - Common-mode choke LCM: $20\text{mH} - 30\text{mH}$;
 - FUSE (fuse): Mandatory; recommended rating: $3.15\text{ A}/250\text{ V}$, slow-blow (if the fuse rating is too low, it may fail during a surge; if too high, it loses its protective function).

Notes

1. The product must be used within the specified parameters; otherwise, it may be permanently damaged.
2. A fuse must be installed at the product's input terminal.
3. If the product operates below the minimum required load, we cannot guarantee that all performance specifications listed in this manual will be met;
4. If the product operates outside its rated load range, we cannot guarantee that all performance specifications listed in this manual will be met;
5. Unless otherwise specified, all data above was measured at $T_a=25^{\circ}\text{C}$, humidity $<75\%$, with nominal input voltage and rated output load (pure resistive load);
6. All test methods for the above specifications are based on our company's standards;
7. The above specifications apply to the product models listed in this manual. Certain specifications for non-standard models may exceed the requirements listed above; please contact our technical staff directly for details;
8. We offer product customization;
9. Product specifications are subject to change without notice; please refer to the latest version of the manual published on our official website.

Contact

GDHUIZHI[®]

广东汇智电子技术有限公司

[Guangdong Huizhi Electronic Technology Co., Ltd.](http://www.huizhi-elec.com)

地址：广东省肇庆市端州区 11 区肇庆大道北侧厂房、办公楼(二期)3 楼

Address: 3rd floor, factory and office building (phase II) on the north side of Zhaoqing Avenue,
District 11, Duanzhou District, Zhaoqing City, Guangdong Province, China

Homepage: www.huizhi-elec.com/www.chinaebizal.com

Tel: +86 - 758 - 2566 585

E-mail: sales@huizhi-elec.com